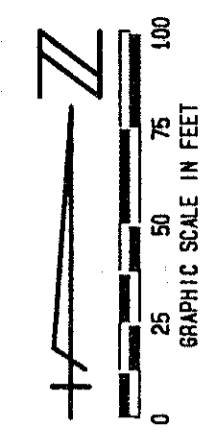


STATE OF FLORIDA
 COUNTY OF PALM BEACH

THIS PLAT WAS FILED FOR
 RECORD _____ DAY OF _____
 AD, 1996 AND DULY RECORDED
 IN PLAT BOOK _____ ON PAGES
 _____ AND _____

DOROTHY H. WILKEN, CLERK
 BY: _____, D.C.



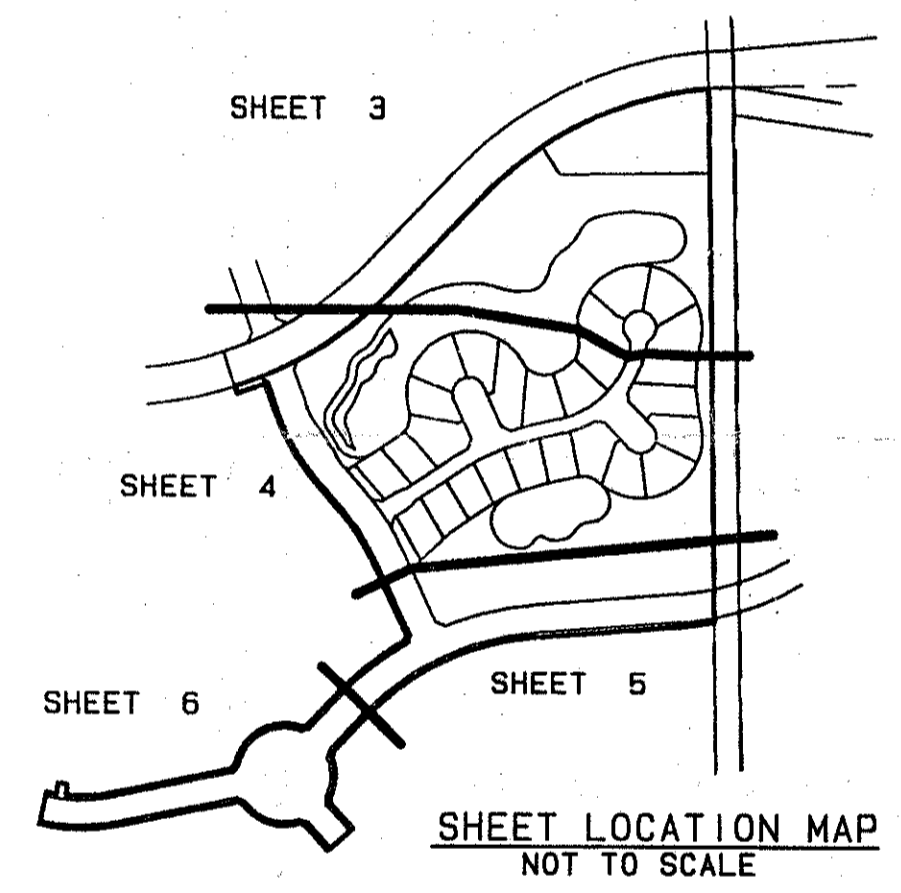
CIRCUIT COURT SEAL

ADDISON RESERVE PLAT TWO

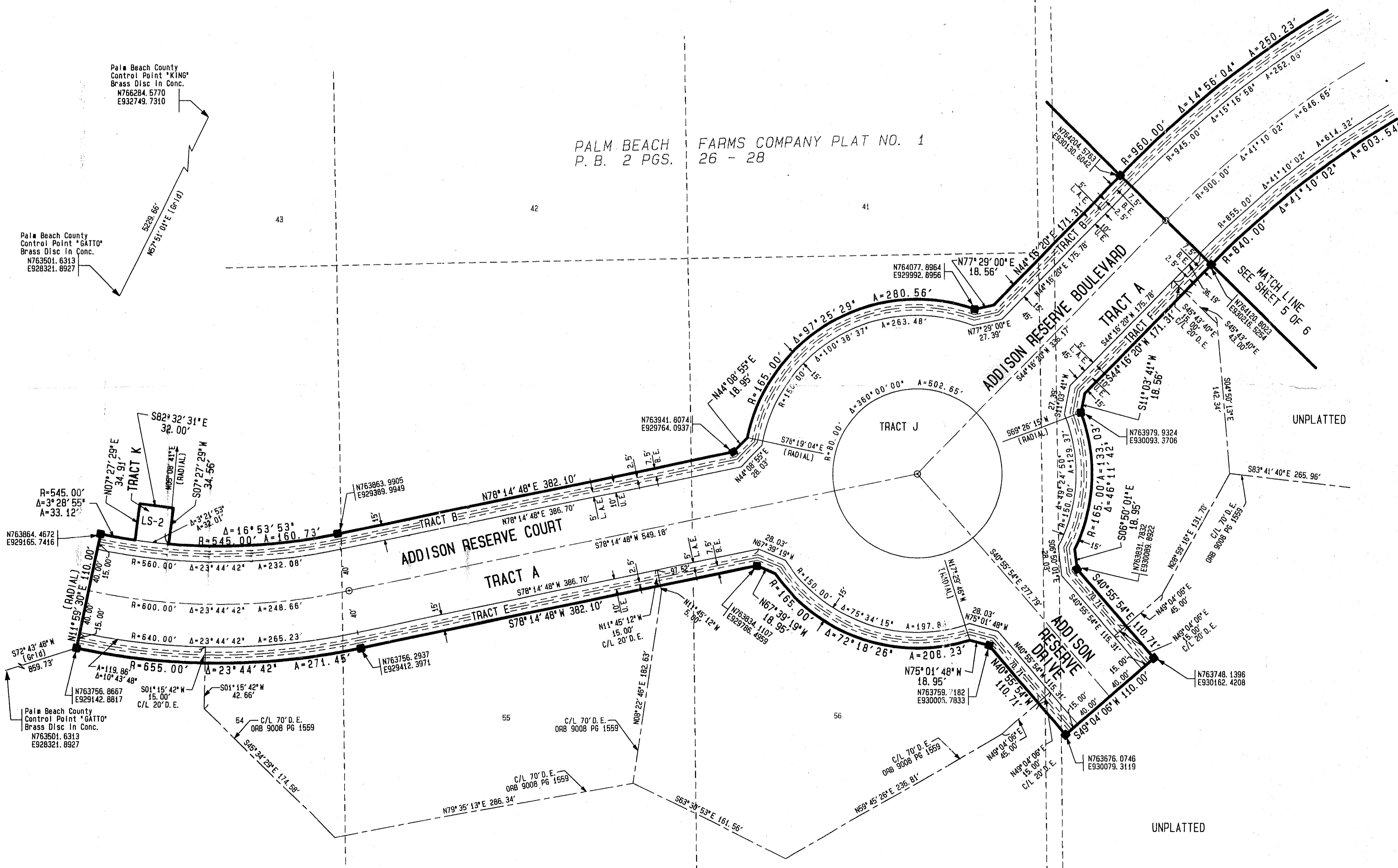
PART OF GLENEAGLES/POLO CLUB WEST P. U. D.
 SITUATE IN SECTION 28, TOWNSHIP 46 SOUTH, RANGE 42 EAST
 AND BEING A PORTION OF "THE PALM BEACH FARMS COMPANY
 PLAT NO. 1" (P.B. 2, PGS. 26-28)
 PALM BEACH COUNTY, FLORIDA
 SEPTEMBER, 1995 SHEET 6 OF 6

- LEGEND:**
- L.M.D.D. LAKE WORTH DRAINAGE DISTRICT
 - FPL FLORIDA POWER & LIGHT
 - ORB OFFICIAL RECORD BOOK
 - PBCD PALM BEACH COUNTY
 - PRM PERMANENT REFERENCE MONUMENT
 - P.B. PLAT BOOK
 - PG PAGE
 - U.E. UTILITY EASEMENT
 - D.E. DRAINAGE EASEMENT
 - TWP TOWNSHIP
 - RGE RANGE
 - (NR) NON RADIAL
 - C CENTERLINE
 - PERMANENT CONTROL POINT
 - PERMANENT REFERENCE MONUMENT
 - SET PLS# 4763
 - PERMANENT REFERENCE MONUMENT FOUND
 - L.M.A.E. LAKE MAINTENANCE ACCESS EASEMENT
 - L.M.E. LAKE MAINTENANCE EASEMENT
 - B.E. BUFFER EASEMENT
 - L.A.E. LIMITED ACCESS EASEMENT

PET 80-215H
#0001
5/3/3/K



PARCEL 6
POLO CLUB WEST PUD
SFD'S



SUBDIVISION ADDISON RESERVE
 BOOK 77 PAGE 8
 FLOOD MAP #215A
 ZONING RT5
 QUAD #52
 SE 80-215
 ZIP CODE 33496
 PUD NAME GLENEAGLES/POLO CLUB WEST

Rev. 12-11-95
 CADD FILE
 TNCRP20

COORDINATE NOTE:

ALL DISTANCES ARE GROUND
 SCALE FACTOR = 1.0000186

COORDINATES SHOWN ARE GRID
 DATUM = NAD 83 1990 ADJUSTMENT
 ZONE = FLORIDA EAST
 LINEAR UNIT = US SURVEY FEET
 COORDINATE SYSTEM 1983 STATE PLANE
 TRANSVERSE MERCATOR PROJECTION
 GROUND DISTANCE X SCALE FACTOR = GRID

N00°42'46"W (Plat) = 00°00'07" Bearing
 N00°42'39"W (Grid) = Clockwise Rotation
 East line of the W 1/2 of E 1/2
 Section 28-46-42
 Basis of Bearing

0230-018

THIS INSTRUMENT WAS PREPARED BY MARY HANNA CLODFELTER, P.L.S., IN THE OFFICES OF MOCK, ROOS & ASSOCIATES, INC., 5720 CORPORATE WAY, WEST PALM BEACH, FLORIDA 33407. SHEET 6 OF 6

MOCK, ROOS & ASSOCIATES, INC.
 5720 CORPORATE WAY, WEST PALM BEACH, FL 33407 (407) 683-3113

SCALE: 1"=50'	DATE: SEPT., 1995	ADDISON RESERVE PLAT TWO
P.A. NO. 94182.06/25	DWG. NO. 46-42-28-65	PART OF "GLENEAGLES/POLO CLUB WEST P.U.D." SECTION 28, TOWNSHIP 46 SOUTH, RANGE 42 EAST